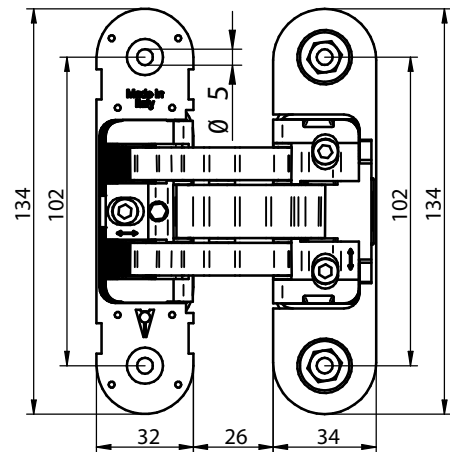
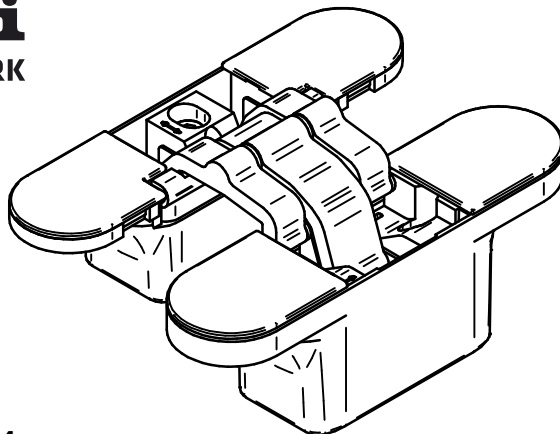


Anselmi

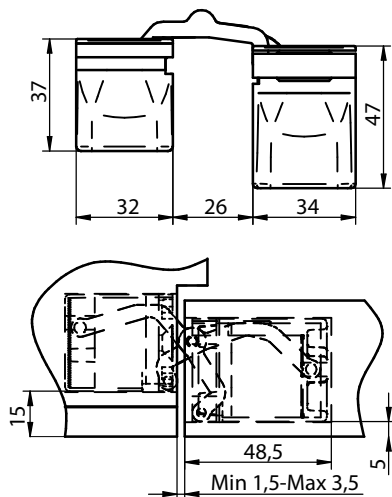
MEMBER OF SIMONSWERK

Anselmi & C. srl
 31056 Roncade (Treviso)
 via Ca' Morelli 19
 tel. +39 0422 707 426
 fax +39 0422 840 836
 www.anselmisrl.it



AN 141 3D FVZ 14/44

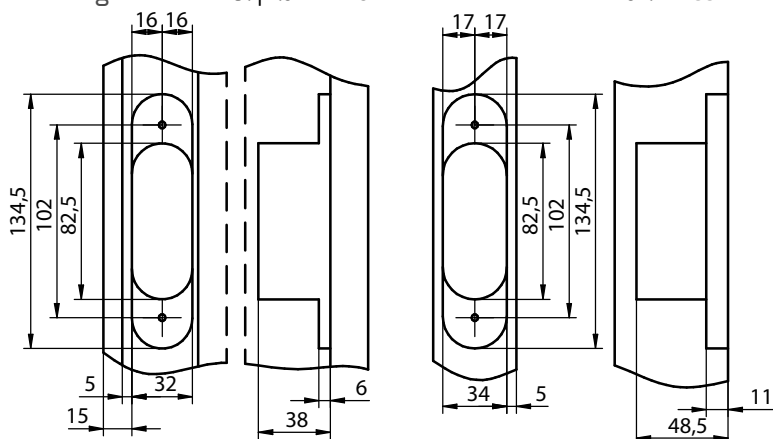
DIT_SP_001 Rev.02 18/04/2018



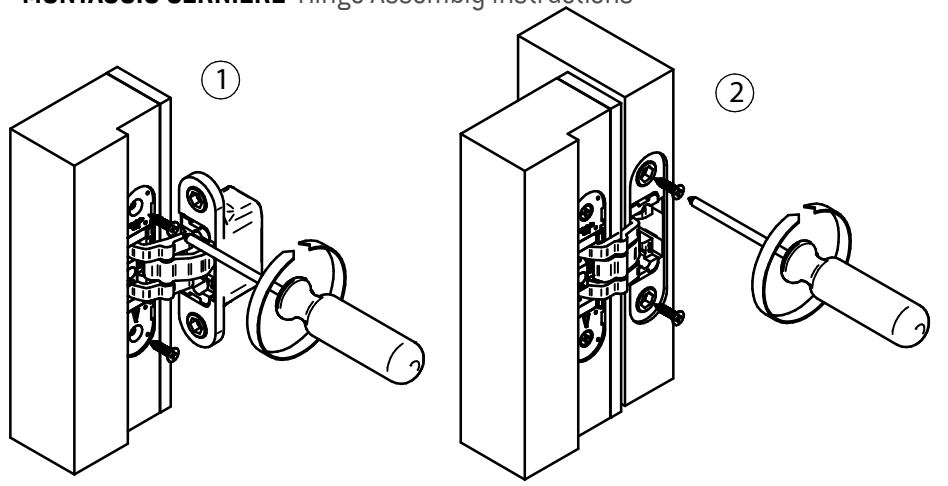
FRESATURE Milling

Stipite Frame

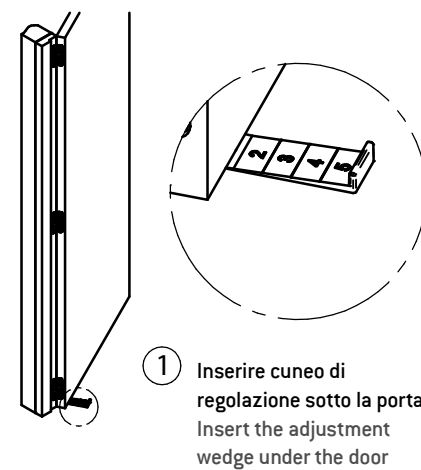
Porta Door



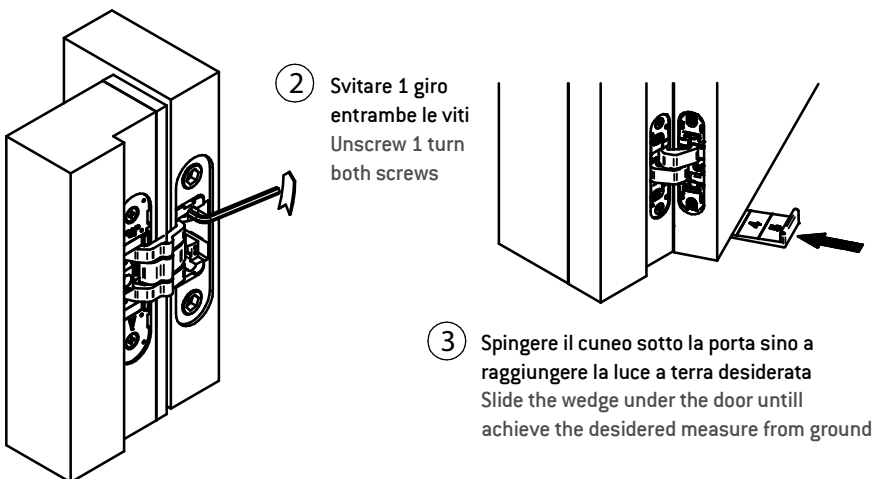
MONTAGGIO CERNIERE Hinge Assembly Instructions



REGOLAZIONE ALTEZZA Height Adjustment



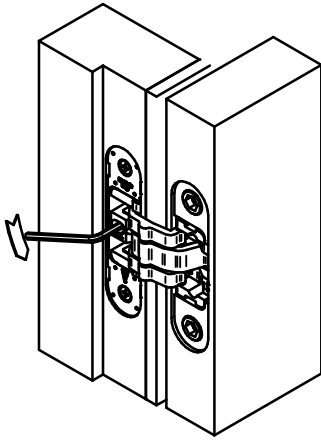
1 Inserire cuneo di regolazione sotto la porta
 Insert the adjustment wedge under the door



2 Svitare 1 giro entrambe le viti
 Unscrew 1 turn both screws

3 Spingere il cuneo sotto la porta sino a raggiungere la luce a terra desiderata
 Slide the wedge under the door until achieve the desired measure from ground

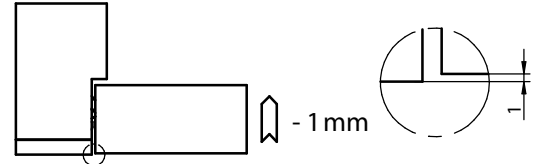
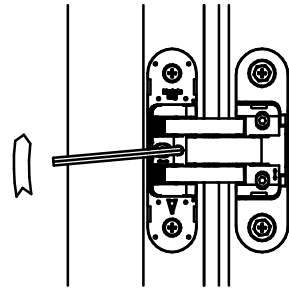
4 Fissare entrambe le viti
 Fix the hinge turning both screws



①
Svitare 1 giro
1 turn of the screw

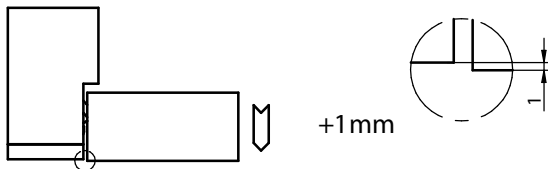
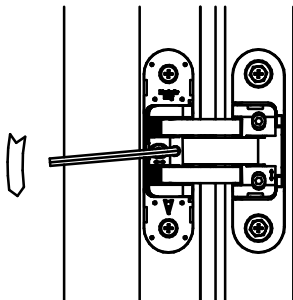
②

Agendo sull'eccentrico in senso orario
la porta trasla di - 1 mm
Acting on the the eccentric clockwise
the door moves to - 1 mm



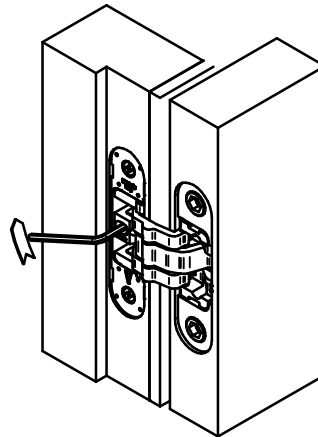
③

Agendo sull'eccentrico in senso antiorario
la porta trasla di + 1 mm
Acting on the the eccentric counterclockwise
the door moves to + 1 mm



④

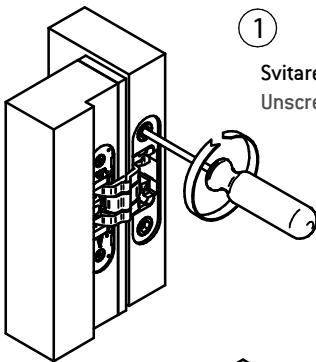
Fissare la vite
Fix the screw



REGOLAZIONE LATERALE Side Adjustment

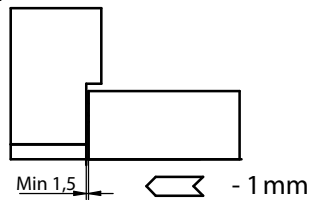
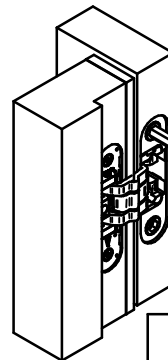
①

Svitare 1 giro entrambe le viti
Unscrew 1 turn both screws



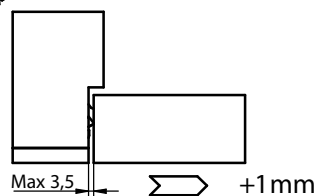
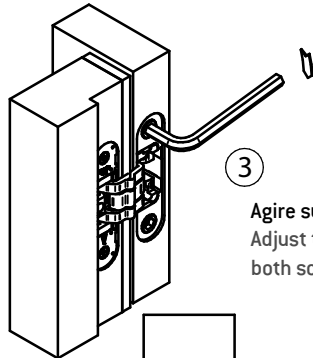
②

Agire su entrambe le viti
Adjust the hinge turning
both screws



③

Agire su entrambe le viti
Adjust the hinge turning
both screws



④

Fissare entrambe le viti
Fix the hinge turning
both screws

